

SelectJet



***Colour separations
on high-density
inkjet film for screen
and flexo printing.***





SelectJet

SelectJet Film: The superior film for screenprint and flexoprint origination.

Applications

Low-resolution black line and halftone images and colour separations.

Benefits

- Easy digital output on film.
- Large and small size imaging.
- Convenient, no chemical processing.
- Full daylight operation.
- Total control over in-house digital workflow and film production.
- Low investment and low operating cost.
- Ideal for most screen and flexo platemaking applications.

SelectJet film has a superior image quality to its competitors.

Film characteristics

SelectJet films are particularly suitable for producing colour separations. The films have a special ink-receiving layer for optimum ink acceptance and density and are specially developed for the highest registration accuracy in different plotter types. The best imaging results are obtained using black dye-based ink.

The thermo-stabilised Agfa polyester base and the special top layers enable the highest registration accuracy to be obtained with different plotter types.

Plotter types

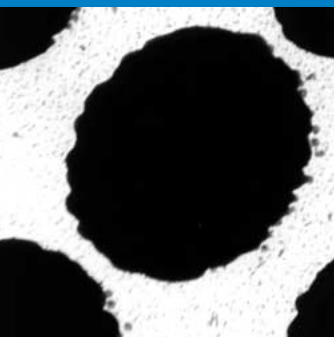
A good image quality is obtained with a range of plotter types, including Agfa Sherpa 24, Epson Stylus 3000, 7000 and 9000, Roland HI-FI JET Pro FJ-500 and FJ-540, Mimaki JV2 and JV4 and HP5000. With most other plotters, an acceptable image quality can be obtained.

Recommended plotter settings

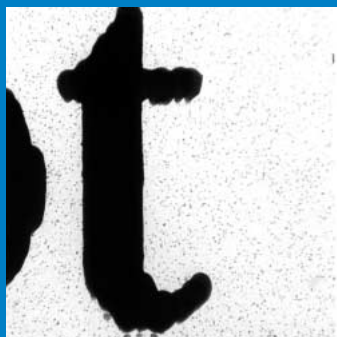
- Agfa Sherpa 24 with Agfa ink: 720 dpi, unidirectional, normal dot volume, low print quality.
- Epson 3000 with Epson ink: 720 dpi, unidirectional, normal dot volume.
- Epson 7000/9000 with Epson ink: 720 dpi, unidirectional, normal dot volume, low print quality.
- Roland HI-FI JET Pro FJ-500 and FJ-540 with Roland ink: 1080 dpi, unidirectional.
- HP5000 with HP UV pigmented ink: 600 dpi, 6 passes, unidirectional.
- Mimaki JV2 with dye Artwork ink: 720 dpi, 4 passes, unidirectional.
- Mimaki JV4 with dye Artwork ink: 1440 x 720 dpi, 8 passes, low print speed, unidirectional.

Settings and image content have an important influence on the imaging speed.

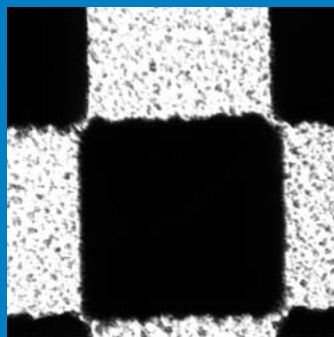




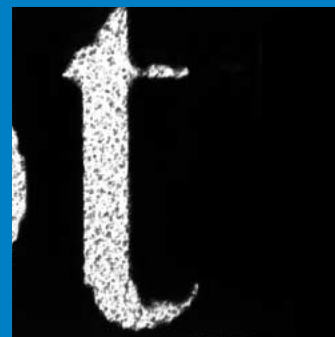
SelectJet Screen Film
50% dot



SelectJet Screen Film
Times New Roman 6 pt



SelectJet Flexo Film
50% dot



SelectJet Flexo Film
Times New Roman 8 pt

SelectJet Screen Film

For dye-based and pigmented inks

Photographic characteristics

- Low Dmin: visual 0.06, UV 0.12
- High Dmax:
 - With piezo heads and dye ink: visual up to 4.00, UV up to 3.70
 - With piezo heads and pigmented ink: visual up to 3.00, UV up to 3.70
 - With thermal heads and pigmented ink: visual up to 3.50, UV up to 3.70
- Excellent dot sharpness.
- Dot gain: 50% + 20 % (at 50 lpi).
- Solid blacks due to good ink coverage.

Physical characteristics

- Special layer for good ink acceptance and dot spread control.
- Accepts dye-based and pigmented inks.
- Matting grains for good vacuum and better image copying. Prevents sticking and ink transfer.
- Good registration accuracy.
- No curling.
- Good dimensional stability.
- Excellent drying characteristics, instantly dry after plotting.
- Good water resistance.
- A film take-up unit is convenient for large sizes.

SelectJet Flexo Film

For dye-based inks

Photographic characteristics

- Low Dmin: visual 0.05, UV 0.08.
- High Dmax: visual up to 4.20, UV up to 3.50.
- Good dot sharpness.
- Dot gain: 50% + 13% (at 50 lpi).
- Solid blacks due to good ink coverage.

Physical characteristics

- Special layer for good acceptance of dye inks and dot spread control.
- Special matting grains for flexo applications, also preventing for sticking and ink transfer.
- Good registration accuracy.
- No curling.
- Good dimensional stability.
- Good drying characteristics; take-up unit recommended.



SelectJet

SelectJet Screen Film SelectJet Flexo Film

RIPs

A specific RIP for colour separations is required to make the system work for screen and flexo printing.

Suitable RIPs are:

- ColorGate Screen&Sign
- Wasatch SoftRIP SP
- ErgoSoft PosterPrint
- For line artwork the Onyx PosterShop RIP can also be used.

Inks

- Agfa Sherpa 24 Black dye ink for Sherpa 24.
- Epson Black T407, T406, SO2098 (for Epson 9000/7000/3000).
- Roland Black dye ink FDY-BK and black pigmented ink FPG-BK.
- HP5000 Black UV ink (pigmented).
- Mimaki JV2 and JV4 Black dye Artwork ink SPC-0258K.

Screen ruling

The maximum screen ruling is limited by the physical properties of the print head and the plotter type used. The image quality is also influenced by the characteristics of the RIP. Excellent results can be obtained with a wide range of plotters in a variety of applications, using a screen ruling of 50 lpi. At screen rulings between 50 lpi and 85 lpi, good results are possible, depending on the system characteristics.



Assortment

The following film sizes are available either as standard sizes or as special sizes. Your local Agfa representative will be pleased to give you more information. For special sizes a minimum order quantity may be required.

All rolls are wound on UCT76 core, EO, not taped to core.
Roll length: 30.5 m.

Widths:

24"/61 cm; 36"/91.4 cm; 44"/111.7 cm; 50"/127 cm;
54"/137.2 cm; 62"/157.5 cm; 66.14"/ 168 cm .

Inks

Sherpa 24 Black Ink, 110 cc cartridge for Sherpa 24.

*Subject to change without prior notice.
AGFA, the Agfa-Rhombus, Sherpa and SelectJet are
trademarks of Agfa-Gevaert AG/N.V., Germany/Belgium.
All other trademarks are recognised.
www.agfa.com
790/EM
Published by Agfa-Gevaert N.V., B 2640 Mortsel-Belgium
NFXQV GB 00200209*